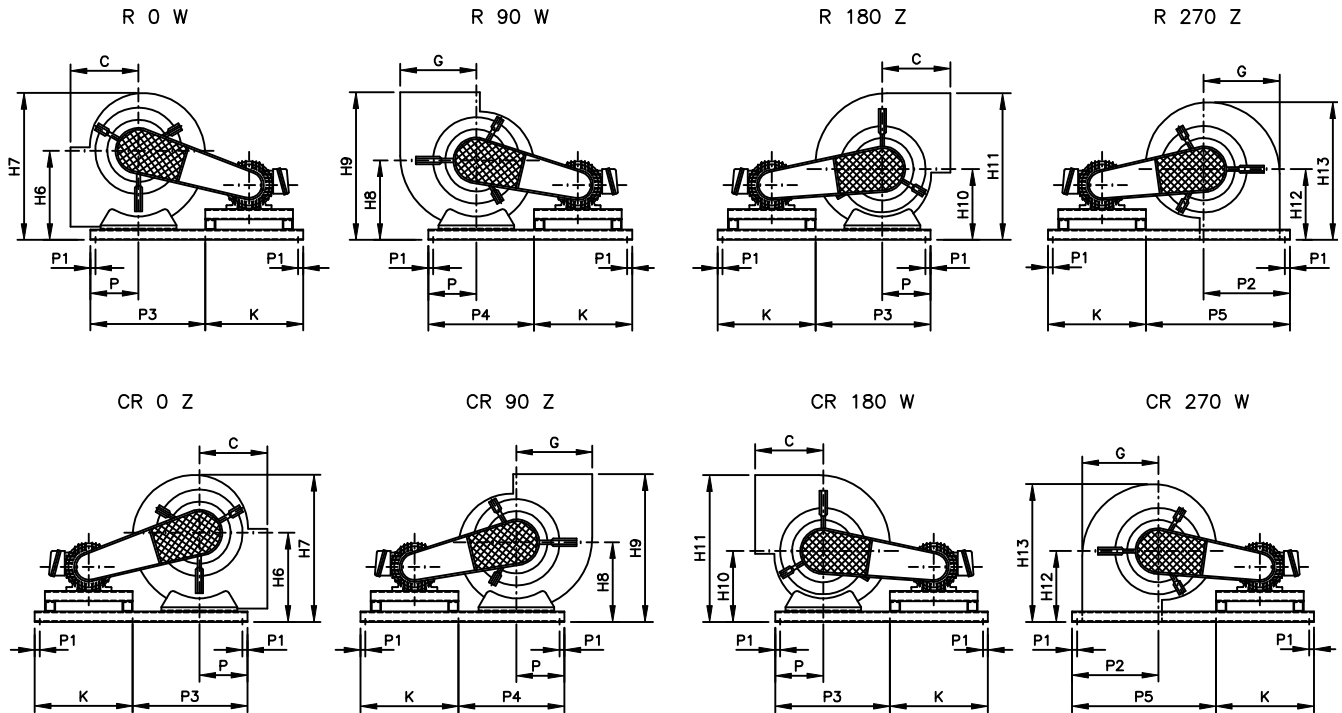


| MODELO | A | A4 | B | C | ØD ^{h7} | ØD2 | E | F | G | H3 | H4 |
|--------|-----|-----|------|-----|------------------|-----|-----|-----|-----|-----|-----|
| 160 | 172 | 76 | 243 | 171 | 20 | 9 | 143 | 124 | 162 | 150 | 130 |
| 180 | 192 | 86 | 268 | 187 | 20 | 9 | 160 | 138 | 182 | 165 | 145 |
| 200 | 212 | 95 | 303 | 199 | 20 | 9 | 177 | 153 | 201 | 185 | 160 |
| 224 | 236 | 108 | 338 | 214 | 20 | 9 | 199 | 172 | 226 | 205 | 180 |
| 250 | 262 | 120 | 378 | 229 | 25 | 9 | 221 | 191 | 251 | 230 | 200 |
| 280 | 292 | 135 | 428 | 250 | 25 | 9 | 247 | 213 | 281 | 255 | 220 |
| 315 | 337 | 148 | 478 | 272 | 25 | 9 | 278 | 240 | 316 | 285 | 250 |
| 355 | 377 | 168 | 533 | 309 | 30 | 9 | 314 | 272 | 356 | 325 | 285 |
| 400 | 423 | 190 | 604 | 332 | 30 | 11 | 353 | 305 | 401 | 365 | 315 |
| 450 | 473 | 215 | 674 | 363 | 35 | 11 | 397 | 343 | 451 | 405 | 350 |
| 500 | 528 | 238 | 754 | 398 | 35 | 11 | 442 | 382 | 502 | 450 | 390 |
| 560 | 588 | 268 | 855 | 433 | 40 | 14 | 495 | 428 | 562 | 505 | 435 |
| 630 | 658 | 303 | 955 | 496 | 40 | 14 | 556 | 480 | 632 | 565 | 490 |
| 710 | 743 | 341 | 1065 | 554 | 50 | 14 | 627 | 542 | 712 | 640 | 555 |

| MODELO | H5 | L | R | S | V | W | X | Y | Z | PESO - kg |
|--------|-----|-----|-----|-----|------|------|----|------|-----|-----------|
| 160 | 170 | 110 | 152 | 40 | 275 | 307 | 6 | 22,8 | 160 | 9 |
| 180 | 190 | 130 | 165 | 40 | 300 | 332 | 6 | 22,8 | 180 | 10 |
| 200 | 210 | 150 | 212 | 40 | 335 | 367 | 6 | 22,8 | 200 | 11 |
| 224 | 235 | 174 | 230 | 40 | 370 | 402 | 6 | 22,8 | 224 | 14 |
| 250 | 260 | 200 | 251 | 50 | 410 | 442 | 8 | 28,3 | 250 | 16 |
| 280 | 290 | 230 | 276 | 50 | 460 | 492 | 8 | 28,3 | 280 | 25 |
| 315 | 325 | 255 | 301 | 50 | 518 | 558 | 8 | 28,3 | 315 | 32 |
| 355 | 365 | 295 | 341 | 50 | 573 | 613 | 8 | 33,3 | 355 | 40 |
| 400 | 410 | 340 | 376 | 50 | 644 | 684 | 8 | 33,3 | 400 | 53 |
| 450 | 460 | 390 | 415 | 60 | 714 | 754 | 10 | 38,3 | 450 | 62 |
| 500 | 510 | 440 | 455 | 60 | 794 | 834 | 10 | 38,3 | 500 | 80 |
| 560 | 570 | 480 | 515 | 80 | 917 | 979 | 12 | 43,3 | 560 | 105 |
| 630 | 640 | 550 | 565 | 80 | 1017 | 1079 | 12 | 43,3 | 630 | 143 |
| 710 | 725 | 630 | 628 | 100 | 1127 | 1189 | 14 | 53,8 | 710 | 231 |

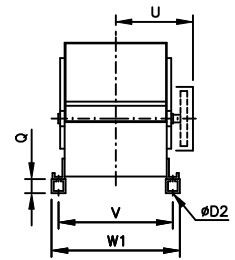


R = RELÓGIO CR = CONTRA RELÓGIO

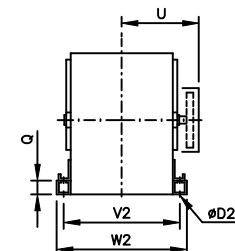
| MODELO | K | H6 | H7 | H8 | H9 | H10 | H11 | H12 | H13 | P | P1 | P2 |
|--------|---|-----|------|-----|------|-----|------|-----|------|-----|----|-----|
| 160 | VARI- ÁVEL CON- FORME MOTOR (pg. 35) | 205 | 335 | 185 | 356 | 165 | 335 | 171 | 321 | 127 | 17 | 215 |
| 180 | | 225 | 370 | 200 | 387 | 180 | 370 | 187 | 352 | 125 | 17 | 218 |
| 200 | | 245 | 405 | 220 | 419 | 195 | 405 | 199 | 384 | 155 | 17 | 220 |
| 224 | | 270 | 450 | 240 | 454 | 215 | 450 | 214 | 419 | 149 | 17 | 265 |
| 250 | | 295 | 495 | 265 | 494 | 235 | 495 | 229 | 459 | 180 | 17 | 285 |
| 280 | | 325 | 545 | 290 | 540 | 255 | 545 | 250 | 505 | 175 | 17 | 315 |
| 315 | | 375 | 625 | 335 | 607 | 300 | 625 | 272 | 557 | 203 | 20 | 350 |
| 355 | | 415 | 700 | 375 | 684 | 335 | 700 | 309 | 634 | 240 | 20 | 385 |
| 400 | | 460 | 775 | 415 | 747 | 365 | 775 | 332 | 697 | 257 | 25 | 445 |
| 450 | | 510 | 860 | 455 | 818 | 400 | 860 | 363 | 768 | 302 | 25 | 490 |
| 500 | | 560 | 950 | 500 | 898 | 440 | 950 | 398 | 848 | 327 | 25 | 555 |
| 560 | | 630 | 1065 | 565 | 998 | 495 | 1065 | 433 | 938 | 352 | 25 | 620 |
| 630 | | 700 | 1190 | 625 | 1121 | 550 | 1190 | 496 | 1061 | 387 | 25 | 690 |
| 710 | | 785 | 1340 | 700 | 1254 | 615 | 1340 | 554 | 1194 | 417 | 25 | 750 |

| MODELO | P3 | P4 | P5 | Q | V2 | W1 | W2 | U | B.U. - kg ¹⁾ |
|--------|------|-----|------|----|-----|-----|-----|-----|-------------------------|
| 160 | 277 | 267 | 345 | 35 | 162 | 194 | 196 | 180 | 6 |
| 180 | 290 | 280 | 363 | 35 | 177 | 209 | 211 | 190 | 7 |
| 200 | 340 | 327 | 380 | 35 | 197 | 229 | 231 | 200 | 8 |
| 224 | 354 | 344 | 445 | 35 | 217 | 249 | 251 | 210 | 9 |
| 250 | 410 | 360 | 485 | 35 | 237 | 269 | 271 | 235 | 10 |
| 280 | 430 | 415 | 535 | 35 | 261 | 293 | 295 | 250 | 15 |
| 315 | 488 | 475 | 600 | 50 | 293 | 333 | 333 | 260 | 20 |
| 355 | 565 | 528 | 670 | 50 | 323 | 363 | 363 | 280 | 22 |
| 400 | 622 | 592 | 760 | 50 | 369 | 409 | 419 | 300 | 24 |
| 450 | 707 | 650 | 840 | 50 | 409 | 449 | 549 | 330 | 25 |
| 500 | 777 | 715 | 945 | 50 | 545 | 494 | 504 | 360 | 30 |
| 560 | 857 | 765 | 1055 | 60 | 523 | 585 | 591 | 420 | 32 |
| 630 | 952 | 867 | 1180 | 60 | 573 | 635 | 641 | 450 | 40 |
| 710 | 1057 | 970 | 1305 | 60 | 633 | 695 | 701 | 500 | 49 |

POSIÇÕES 0°, 90° e 180°

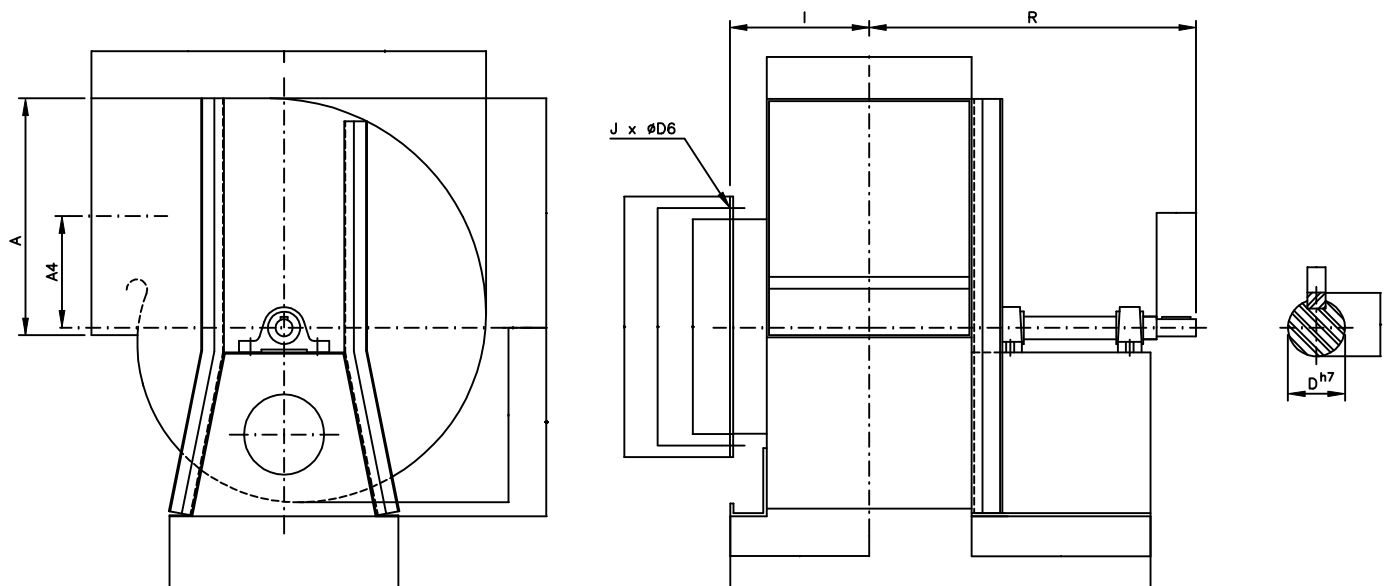


POSIÇÃO 270°



NOTAS: 1) PESO DA BASE ÚNICA COM TRILHOS SEM MOTOR.

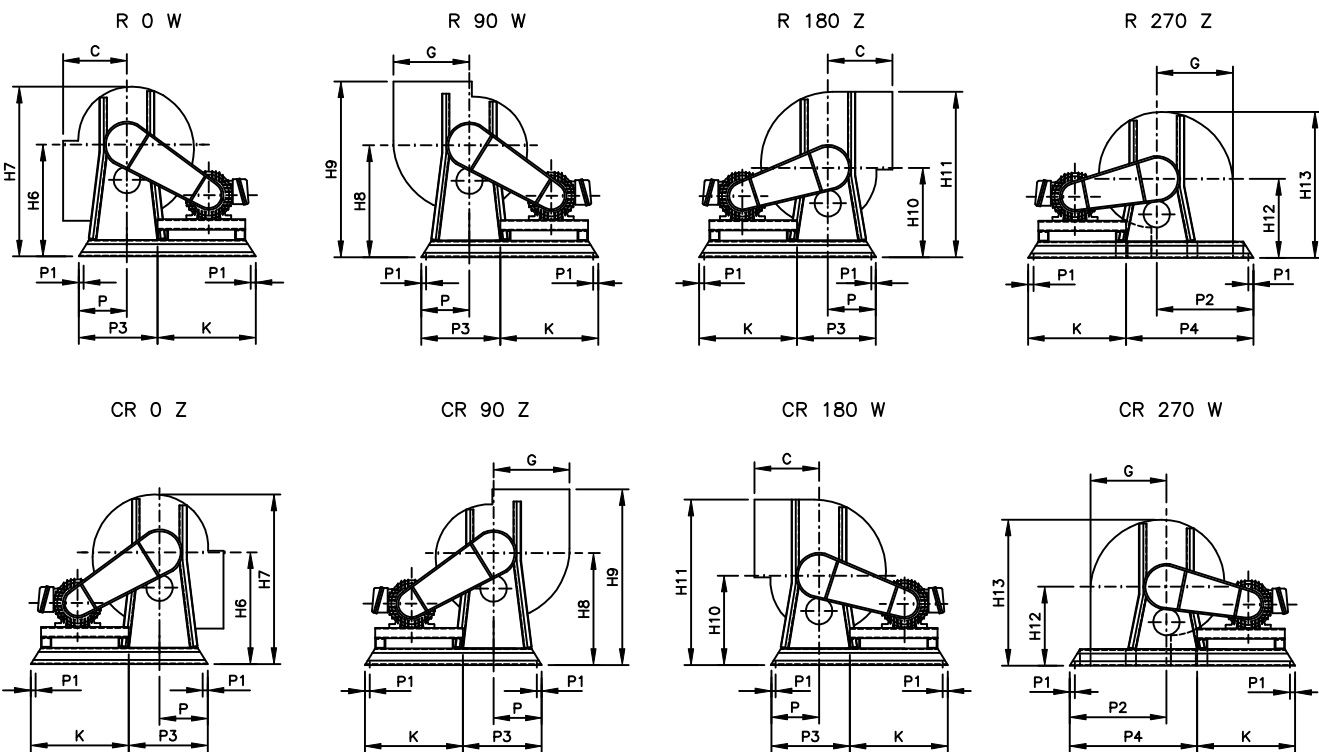
2) AO FABRICANTE RESERVA-SE O DIRETO DE ALTERAÇÃO SEM PRÉVIO AVISO. SET/15



| MOD. | A | A4 | B | C | ØD ^{h7} | ØD2 | ØD3 | ØD4 | ØD5 | J x ØD6 | E |
|------|-----|-----|-----|-----|------------------|-----|-----|-----|-----|---------|-----|
| 160 | 170 | 75 | 125 | 171 | 20 | 10 | 160 | 185 | 210 | 6 x 7 | 143 |
| 180 | 192 | 86 | 143 | 187 | 20 | 10 | 180 | 205 | 230 | 6 x 7 | 160 |
| 200 | 212 | 95 | 163 | 199 | 20 | 10 | 200 | 225 | 250 | 6 x 7 | 177 |
| 224 | 236 | 108 | 183 | 214 | 20 | 10 | 224 | 250 | 274 | 6 x 7 | 199 |
| 250 | 262 | 120 | 203 | 229 | 25 | 10 | 250 | 275 | 300 | 6 x 7 | 221 |
| 280 | 292 | 135 | 227 | 250 | 25 | 10 | 280 | 312 | 344 | 8 x 9 | 247 |
| 315 | 337 | 148 | 253 | 272 | 25 | 10 | 315 | 347 | 379 | 8 x 9 | 278 |
| 355 | 377 | 168 | 283 | 309 | 30 | 10 | 355 | 387 | 419 | 8 x 9 | 314 |
| 400 | 423 | 190 | 319 | 332 | 30 | 10 | 400 | 438 | 476 | 12 x 9 | 353 |
| 450 | 473 | 215 | 359 | 363 | 35 | 12 | 450 | 488 | 526 | 12 x 9 | 397 |
| 500 | 528 | 238 | 404 | 398 | 35 | 12 | 500 | 538 | 576 | 12 x 9 | 442 |
| 560 | 588 | 268 | 455 | 433 | 40 | 12 | 560 | 598 | 636 | 16 x 9 | 495 |
| 630 | 658 | 303 | 505 | 496 | 40 | 12 | 630 | 668 | 706 | 16 x 9 | 556 |
| 710 | 743 | 341 | 565 | 554 | 50 | 14 | 710 | 760 | 810 | 16 x 11 | 627 |

| MOD. | F | G | I | L | R | S | V | W | X | Y | Z | CARC. MÁX. | PESO - kg |
|------|-----|-----|-----|-----|-----|-----|-----|------|----|------|-----|------------|-----------|
| 160 | 124 | 161 | 133 | 300 | 419 | 58 | 102 | 466 | 6 | 22,8 | 224 | 80 | 8 |
| 180 | 138 | 182 | 121 | 300 | 424 | 55 | 110 | 481 | 6 | 22,8 | 224 | 80 | 9 |
| 200 | 153 | 201 | 131 | 300 | 429 | 50 | 120 | 501 | 6 | 22,8 | 224 | 80 | 13 |
| 224 | 172 | 226 | 141 | 300 | 435 | 46 | 130 | 522 | 6 | 22,8 | 224 | 80 | 14 |
| 250 | 191 | 251 | 216 | 350 | 507 | 62 | 140 | 592 | 8 | 28,3 | 315 | 90 | 17 |
| 280 | 213 | 281 | 228 | 350 | 522 | 66 | 152 | 616 | 8 | 28,3 | 315 | 90 | 22 |
| 315 | 240 | 316 | 241 | 350 | 534 | 65 | 165 | 642 | 8 | 28,3 | 315 | 90 | 26 |
| 355 | 272 | 356 | 256 | 400 | 607 | 72 | 180 | 722 | 8 | 33,3 | 355 | 112 | 30 |
| 400 | 305 | 401 | 274 | 400 | 624 | 71 | 200 | 757 | 8 | 33,3 | 355 | 112 | 33 |
| 450 | 343 | 451 | 294 | 480 | 731 | 82 | 230 | 889 | 10 | 38,3 | 450 | 132 | 45 |
| 500 | 382 | 502 | 317 | 480 | 753 | 82 | 252 | 934 | 10 | 38,3 | 450 | 132 | 74 |
| 560 | 428 | 562 | 342 | 473 | 819 | 107 | 278 | 979 | 12 | 43,3 | 560 | 132 | 106 |
| 630 | 480 | 632 | 367 | 473 | 821 | 110 | 303 | 1029 | 12 | 43,3 | 560 | 132 | 120 |
| 710 | 542 | 712 | 402 | 573 | 984 | 140 | 341 | 1197 | 14 | 53,8 | 710 | 160 | 155 |

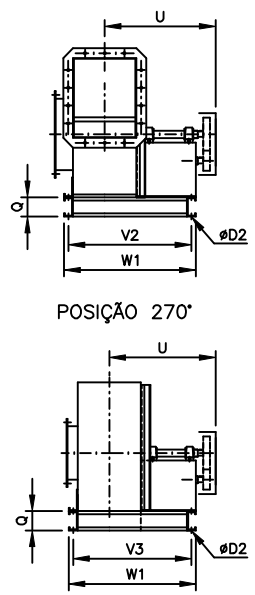
NOTAS: 1) AO FABRICANTE RESERVA-SE O DIRETO DE ALTERAÇÃO SEM PRÉVIO AVISO. MAI/15.



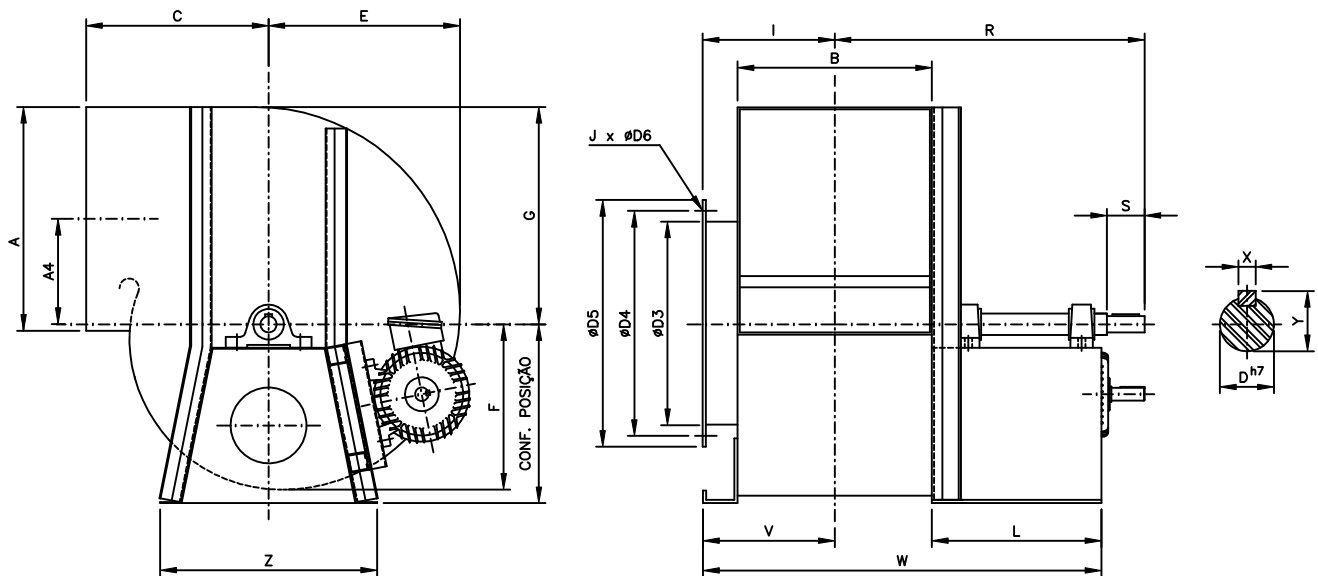
R = RELÓGIO CR = CONTRA RELÓGIO

| MODELO | K | H6 | H7 | H8 | H9 | H10 | H11 | H12 | H13 | P | P1 | P2 |
|--------|---|-----|------|-----|------|-----|------|------|------|-----|----|-----|
| 160 | VARI- ÁVEL CON- FORME MOTOR (pg. 35) | 210 | 334 | 210 | 381 | 185 | 346 | 221 | 364 | 149 | 15 | 234 |
| 180 | | 230 | 268 | 230 | 417 | 200 | 382 | 237 | 397 | 149 | 15 | 254 |
| 200 | | 250 | 404 | 250 | 449 | 215 | 416 | 249 | 427 | 149 | 15 | 274 |
| 224 | | 274 | 446 | 274 | 488 | 234 | 460 | 264 | 464 | 149 | 15 | 298 |
| 250 | | 300 | 492 | 300 | 529 | 255 | 506 | 279 | 501 | 195 | 15 | 324 |
| 280 | | 330 | 544 | 330 | 580 | 280 | 561 | 300 | 548 | 195 | 15 | 354 |
| 315 | | 365 | 605 | 365 | 637 | 310 | 626 | 322 | 601 | 195 | 15 | 389 |
| 355 | | 405 | 678 | 405 | 714 | 345 | 701 | 359 | 674 | 215 | 15 | 429 |
| 400 | | 465 | 756 | 465 | 782 | 395 | 796 | 382 | 735 | 215 | 20 | 474 |
| 450 | | 515 | 859 | 515 | 878 | 435 | 886 | 428 | 826 | 275 | 20 | 550 |
| 500 | | 565 | 948 | 565 | 963 | 475 | 977 | 463 | 906 | 275 | 20 | 600 |
| 560 | | 625 | 1054 | 625 | 1058 | 525 | 1087 | 498 | 994 | 330 | 20 | 660 |
| 630 | | 695 | 1175 | 695 | 1191 | 580 | 1212 | 561 | 1118 | 330 | 20 | 730 |
| 710 | | 790 | 1332 | 790 | 1344 | 660 | 1372 | 1084 | 2186 | 413 | 25 | 826 |

| MODELO | P3 | P4 | Q | U | V2 | V3 | W1 | B.U. - kg ¹⁾ |
|--------|-----|------|----|------|------|------|------|-------------------------|
| 160 | 224 | | 50 | 429 | 522 | 522 | 559 | 7 |
| 180 | 224 | | 50 | 434 | 522 | 522 | 559 | 7 |
| 200 | 224 | 351 | 50 | 439 | 522 | 522 | 559 | 7 |
| 224 | 224 | 375 | 50 | 445 | 522 | 522 | 559 | 7 |
| 250 | 315 | 447 | 50 | 517 | 642 | 642 | 679 | 8 |
| 280 | 315 | 477 | 50 | 532 | 642 | 642 | 679 | 8 |
| 315 | 315 | 512 | 50 | 544 | 642 | 642 | 679 | 8 |
| 355 | 355 | 572 | 50 | 617 | 757 | 757 | 794 | 11 |
| 400 | 355 | 617 | 50 | 624 | 757 | 757 | 794 | 11 |
| 450 | 450 | 725 | 65 | 732 | 935 | 935 | 985 | 19 |
| 500 | 450 | 775 | 65 | 763 | 935 | 935 | 985 | 19 |
| 560 | 560 | 890 | 65 | 839 | 985 | 985 | 1035 | 21 |
| 630 | 560 | 960 | 65 | 841 | 985 | 985 | 1035 | 21 |
| 710 | 710 | 1123 | 80 | 1004 | 1223 | 1223 | 1281 | 25 |

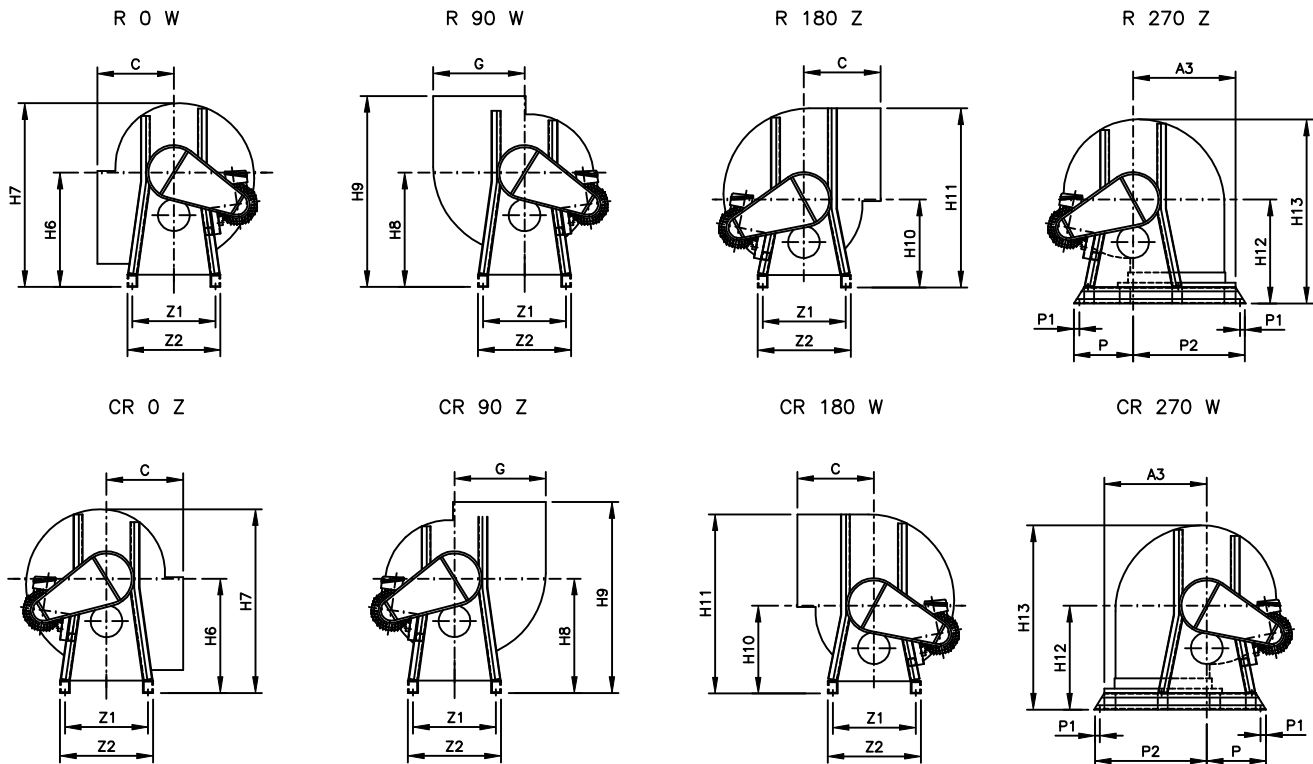


NOTAS: 1) PESO DA BASE ÚNICA COM TRILHOS SEM MOTOR.
2) AO FABRICANTE RESERVA-SE O DIRETO DE ALTERAÇÃO SEM PRÉVIO AVISO. MAI/15.



| MOD. | A | A4 | B | C | ØD ^{h7} | ØD2 | ØD3 | ØD4 | ØD5 | J x ØD6 | E |
|------|-----|-----|-----|-----|------------------|-----|-----|-----|-----|---------|-----|
| 250 | 262 | 120 | 203 | 229 | 25 | 10 | 250 | 275 | 300 | 6 x 7 | 221 |
| 280 | 292 | 135 | 227 | 250 | 25 | 10 | 280 | 312 | 344 | 8 x 9 | 247 |
| 315 | 337 | 148 | 253 | 272 | 25 | 10 | 315 | 347 | 379 | 8 x 9 | 278 |
| 355 | 377 | 168 | 283 | 309 | 30 | 10 | 355 | 387 | 419 | 8 x 9 | 314 |
| 400 | 423 | 190 | 319 | 332 | 30 | 10 | 400 | 438 | 476 | 12 x 9 | 353 |
| 450 | 473 | 215 | 359 | 363 | 35 | 12 | 450 | 488 | 526 | 12 x 9 | 397 |
| 500 | 528 | 238 | 404 | 398 | 35 | 12 | 500 | 538 | 576 | 12 x 9 | 442 |
| 560 | 588 | 268 | 455 | 433 | 40 | 12 | 560 | 598 | 636 | 16 x 9 | 495 |
| 630 | 658 | 303 | 505 | 496 | 40 | 12 | 630 | 668 | 706 | 16 x 9 | 556 |
| 710 | 743 | 341 | 565 | 554 | 50 | 14 | 710 | 760 | 810 | 16 x 11 | 627 |

| MOD. | F | G | I | L | R | S | V | W | X | Y | Z | CARC. MÁX | PESO - kg |
|------|-----|-----|-----|-----|-----|-----|-----|------|----|------|-----|-----------|-----------|
| 250 | 191 | 251 | 216 | 350 | 507 | 62 | 140 | 592 | 8 | 28,3 | 315 | 90 | 17 |
| 280 | 213 | 281 | 228 | 350 | 522 | 66 | 152 | 616 | 8 | 28,3 | 315 | 90 | 22 |
| 315 | 240 | 316 | 241 | 350 | 534 | 65 | 165 | 642 | 8 | 28,3 | 315 | 90 | 26 |
| 355 | 272 | 356 | 256 | 400 | 607 | 72 | 180 | 722 | 8 | 33,3 | 355 | 112 | 30 |
| 400 | 305 | 401 | 274 | 400 | 624 | 71 | 200 | 757 | 8 | 33,3 | 355 | 112 | 33 |
| 450 | 343 | 451 | 294 | 480 | 731 | 82 | 230 | 889 | 10 | 38,3 | 450 | 132 | 45 |
| 500 | 382 | 502 | 317 | 480 | 753 | 82 | 252 | 934 | 10 | 38,3 | 450 | 132 | 74 |
| 560 | 428 | 562 | 342 | 473 | 819 | 107 | 278 | 979 | 12 | 43,3 | 560 | 132 | 106 |
| 630 | 480 | 632 | 367 | 473 | 821 | 110 | 303 | 1029 | 12 | 43,3 | 560 | 132 | 120 |
| 710 | 542 | 712 | 402 | 573 | 984 | 140 | 341 | 1197 | 14 | 53,8 | 710 | 160 | 155 |



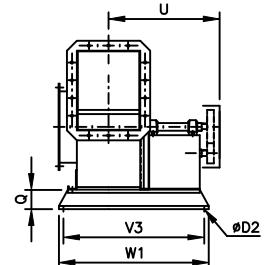
R = RELÓGIO

CR = CONTRA RELÓGIO

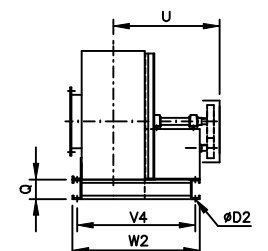
| MODELO | H6 | H7 | H8 | H9 | H10 | H11 | H12 | H13 | Z1 | Z2 |
|--------|-----|------|-----|------|-----|------|-----|------|-----|-----|
| 280 | 330 | 544 | 330 | 580 | 280 | 263 | 300 | 548 | 378 | 315 |
| 315 | 365 | 605 | 365 | 637 | 310 | 628 | 322 | 601 | 378 | 315 |
| 355 | 405 | 678 | 405 | 714 | 345 | 703 | 359 | 674 | 318 | 355 |
| 400 | 465 | 756 | 465 | 782 | 395 | 784 | 382 | 735 | 318 | 355 |
| 450 | 515 | 859 | 515 | 878 | 435 | 889 | 428 | 826 | 400 | 450 |
| 500 | 565 | 948 | 565 | 963 | 475 | 979 | 463 | 906 | 400 | 450 |
| 560 | 625 | 1054 | 625 | 1058 | 525 | 1089 | 498 | 994 | 510 | 560 |
| 630 | 695 | 1175 | 695 | 1191 | 580 | 1214 | 561 | 1118 | 510 | 560 |
| 710 | 790 | 1332 | 790 | 1344 | 660 | 1374 | 634 | 1261 | 652 | 710 |

| MODELO | P | P1 | P2 | Q | V3 | V4 | W1 | W2 | U | BU kg ¹⁾ 0°/90°/180°-270° |
|--------|-----|----|-----|----|------|------|------|------|------|---|
| 280 | 195 | 15 | 354 | 50 | 725 | 588 | 755 | 625 | 545 | 3-7 |
| 315 | 195 | 15 | 389 | 50 | 725 | 613 | 755 | 660 | 560 | 3-7 |
| 355 | 215 | 15 | 429 | 50 | 840 | 683 | 870 | 730 | 630 | 4-8 |
| 400 | 215 | 15 | 474 | 50 | 840 | 728 | 870 | 765 | 645 | 4-14 |
| 450 | 275 | 20 | 550 | 65 | 1045 | 850 | 1085 | 900 | 755 | 8-17 |
| 500 | 275 | 20 | 600 | 65 | 1045 | 885 | 1085 | 945 | 780 | 8-18 |
| 560 | 330 | 20 | 660 | 65 | 1100 | 940 | 1140 | 990 | 820 | 8-20 |
| 630 | 330 | 20 | 730 | 65 | 1100 | 990 | 1140 | 1040 | 850 | 8-21 |
| 710 | 413 | 25 | 826 | 80 | 1350 | 1152 | 1400 | 1210 | 1020 | 12-28 |

POSIÇÕES 0°, 90° e 180°

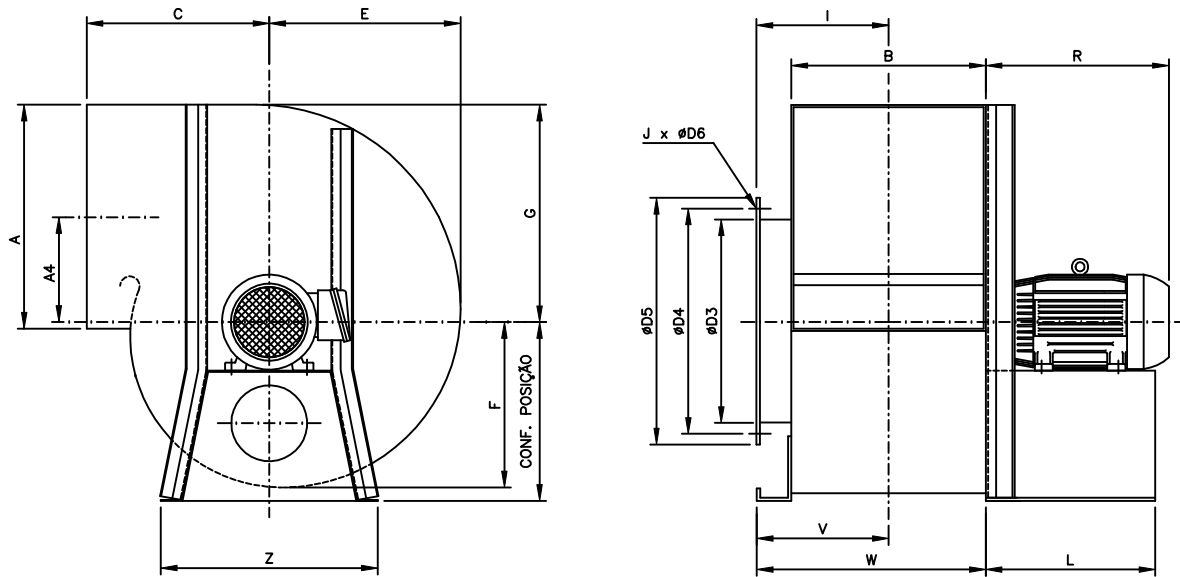


POSIÇÃO 270°



NOTAS: 1) PESO DA BASE ÚNICA SEM MOTOR.

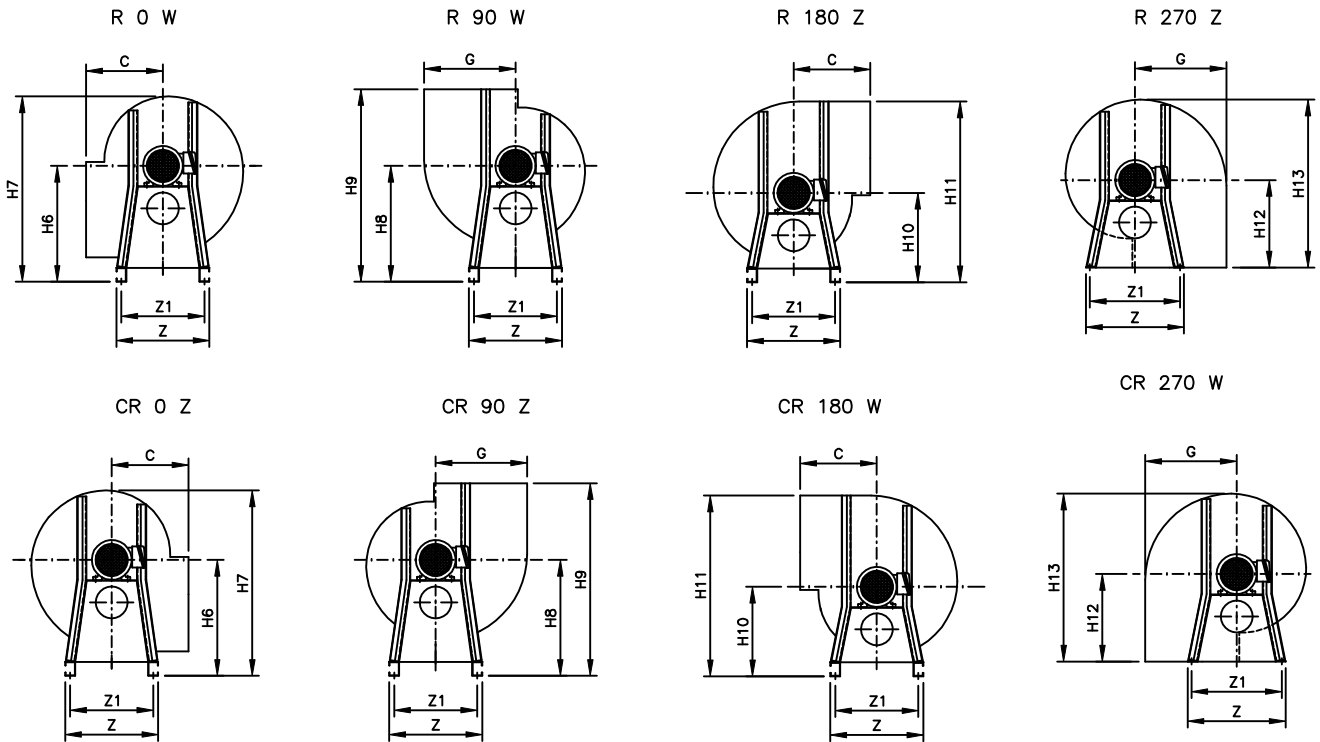
2) AO FABRICANTE RESERVA-SE O DIREITO DE ALTERAÇÃO SEM PRÉVIO AVISO. MAI/15.



| MOD. | A | A4 | B | C | ØD2 | ØD3 | ØD4 | ØD5 | J x ØD6 |
|------|-----|-----|-----|-----|-----|-----|-----|-----|---------|
| 160 | 172 | 76 | 128 | 171 | 10 | 160 | 185 | 210 | 6 x 7 |
| 180 | 192 | 86 | 143 | 187 | 10 | 180 | 205 | 230 | 6 x 7 |
| 200 | 212 | 95 | 163 | 199 | 10 | 200 | 225 | 250 | 6 x 7 |
| 224 | 236 | 108 | 183 | 214 | 10 | 224 | 250 | 274 | 6 x 7 |
| 250 | 262 | 120 | 203 | 229 | 10 | 250 | 275 | 300 | 6 x 7 |
| 280 | 292 | 135 | 227 | 250 | 10 | 280 | 312 | 344 | 8 x 9 |
| 315 | 337 | 148 | 253 | 272 | 10 | 315 | 347 | 379 | 8 x 9 |
| 355 | 377 | 168 | 283 | 309 | 10 | 355 | 387 | 419 | 8 x 9 |

| MOD. | E | F | G | I | V | W | PESO - kg |
|------|-----|-----|-----|-----|-----|-----|-----------|
| 160 | 143 | 124 | 162 | 114 | 101 | 163 | 7 |
| 180 | 160 | 138 | 182 | 121 | 108 | 178 | 8 |
| 200 | 177 | 153 | 201 | 131 | 118 | 198 | 10 |
| 224 | 199 | 172 | 226 | 141 | 128 | 218 | 12 |
| 250 | 221 | 191 | 251 | 216 | 138 | 138 | 18 |
| 280 | 247 | 213 | 281 | 228 | 150 | 150 | 25 |
| 315 | 278 | 240 | 316 | 241 | 163 | 163 | 30 |
| 355 | 314 | 272 | 356 | 256 | 178 | 178 | 40 |

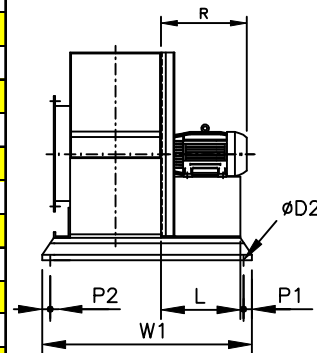
| MODELO | H6 | H7 | H8 | H9 | H10 | H11 | H12 | H13 |
|--------|-----|-----|-----|-----|-----|-----|-----|-----|
| 160 | 230 | 335 | 180 | 401 | 230 | 392 | 171 | 314 |
| 180 | 230 | 346 | 180 | 417 | 230 | 412 | 187 | 347 |
| 200 | 274 | 403 | 274 | 473 | 274 | 475 | 199 | 376 |
| 224 | 274 | 419 | 274 | 488 | 274 | 500 | 214 | 413 |
| 250 | 330 | 491 | 330 | 559 | 330 | 581 | 229 | 450 |
| 280 | 330 | 509 | 330 | 580 | 330 | 611 | 250 | 497 |
| 315 | 365 | 605 | 365 | 637 | 310 | 626 | 272 | 550 |
| 355 | 405 | 678 | 405 | 714 | 345 | 701 | 309 | 623 |



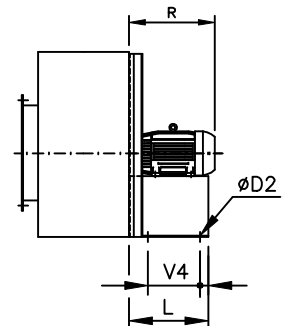
R = RELÓGIO CR = CONTRA RELÓGIO

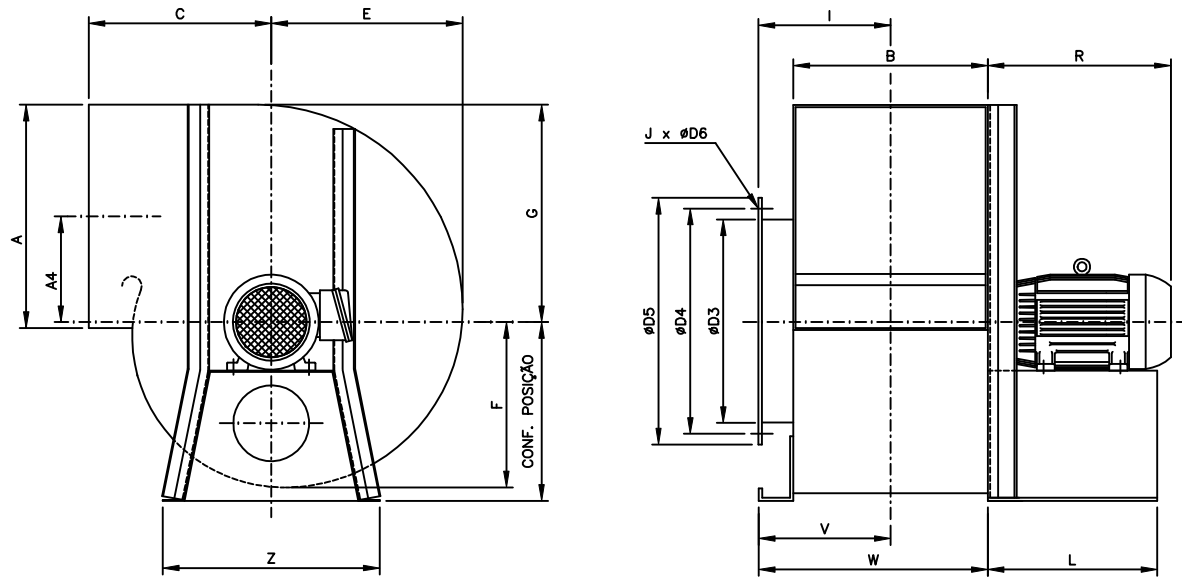
| MODELO | CARC. MOTOR | Z | Z1 | P1 | P2 | W 1 | V4 | L |
|--------|-------------|-----|-----|----|----|-----|-----|-----|
| 160 | 63 | 224 | 186 | 19 | 19 | 435 | 108 | 148 |
| | 71 | 224 | 186 | | | 435 | 137 | 177 |
| | 80 | 224 | 186 | | | 480 | 160 | 200 |
| 180 | 63 | 224 | 186 | 19 | 19 | 435 | 108 | 160 |
| | 71 | 224 | 186 | | | 435 | 137 | 180 |
| | 80 | 224 | 186 | | | 480 | 160 | 200 |
| 200 | 63 | 250 | 212 | 19 | 19 | 480 | 112 | 153 |
| | 71 | 250 | 212 | | | 480 | 152 | 194 |
| | 80 | 250 | 212 | | | 480 | 152 | 194 |
| 224 | 63 | 250 | 212 | 19 | 19 | 480 | 112 | 153 |
| | 71 | 250 | 212 | | | 480 | 152 | 194 |
| | 80 | 250 | 212 | | | 480 | 152 | 194 |
| 250 | 63 | 280 | 242 | 19 | 19 | 540 | 112 | 153 |
| | 71 | | | | | 540 | 152 | 194 |
| | 80 | | | | | 540 | 152 | 194 |
| | 90 | | | | | 590 | 212 | 254 |
| 280 | 63 | 280 | 242 | 19 | 19 | 540 | 112 | 153 |
| | 71 | | | | | 540 | 152 | 194 |
| | 80 | | | | | 540 | 152 | 194 |
| | 90 | | | | | 590 | 212 | 254 |
| 315 | 71 | 315 | 277 | 19 | 19 | 590 | - | 238 |
| | 80 | | | | | 590 | - | 238 |
| | 90 | | | | | 590 | - | 238 |
| | 100 | | | | | 725 | - | 300 |
| 355 | 71 | 355 | 317 | 19 | 19 | 590 | - | 238 |
| | 80 | | | | | 590 | - | 238 |
| | 90 | | | | | 590 | - | 238 |
| | 100 | | | | | 725 | - | 300 |
| | 112 | | | | | 725 | - | 300 |

POSIÇÕES 0°, 90° e 180°



POSIÇÃO 270°

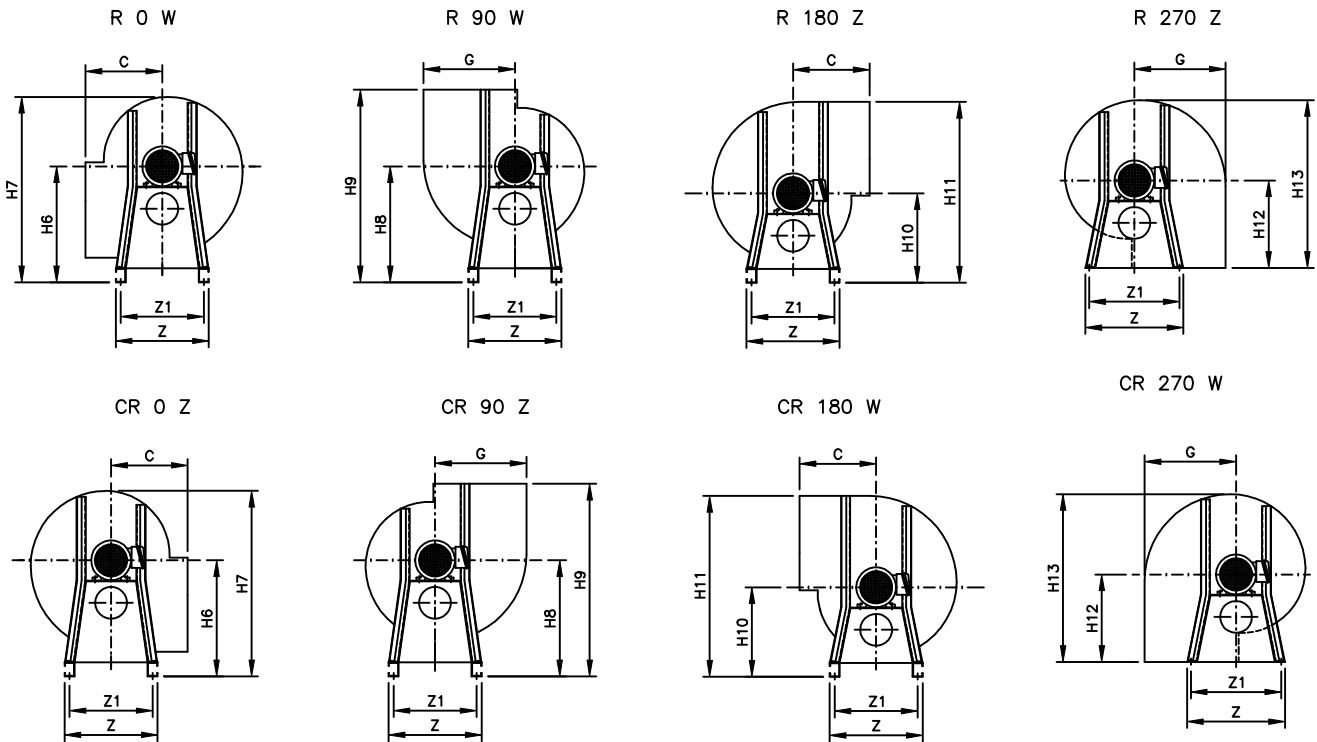




| MOD. | A | A4 | B | C | ØD2 | ØD3 | ØD4 | ØD5 | J x ØD6 |
|------|-----|-----|-----|-----|-----|-----|-----|-----|---------|
| 400 | 423 | 190 | 319 | 332 | 10 | 400 | 438 | 476 | 12 x 9 |
| 450 | 473 | 215 | 359 | 363 | 12 | 450 | 488 | 526 | 12 x 9 |
| 500 | 528 | 238 | 404 | 398 | 12 | 500 | 538 | 576 | 12 x 9 |
| 560 | 588 | 268 | 455 | 433 | 12 | 560 | 598 | 636 | 16 x 9 |
| 630 | 658 | 303 | 505 | 496 | 12 | 630 | 668 | 706 | 16 x 9 |
| 710 | 743 | 341 | 565 | 554 | 14 | 710 | 760 | 810 | 16 x 11 |

| MOD. | E | F | G | I | V | W | PESO - kg |
|------|-----|-----|-----|-----|-----|-----|-----------|
| 400 | 353 | 305 | 401 | 274 | 200 | 359 | 35 |
| 450 | 397 | 343 | 451 | 294 | 220 | 399 | 40 |
| 500 | 442 | 382 | 502 | 317 | 242 | 444 | 52 |
| 560 | 495 | 428 | 562 | 342 | 290 | 517 | 68 |
| 630 | 556 | 480 | 632 | 367 | 315 | 567 | 103 |
| 710 | 627 | 542 | 712 | 402 | 345 | 627 | 158 |

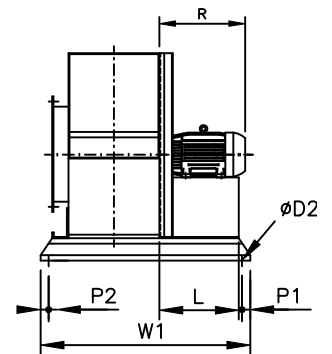
| MODELO | H6 | H7 | H8 | H9 | H10 | H11 | H12 | H13 |
|--------|-----|------|-----|------|-----|------|------|------|
| 400 | 465 | 756 | 465 | 782 | 395 | 796 | 382 | 735 |
| 450 | 515 | 859 | 515 | 878 | 435 | 886 | 428 | 826 |
| 500 | 565 | 948 | 565 | 963 | 475 | 977 | 463 | 906 |
| 560 | 625 | 1054 | 625 | 1058 | 525 | 1087 | 498 | 994 |
| 630 | 695 | 1175 | 695 | 1191 | 580 | 1212 | 561 | 1118 |
| 710 | 790 | 1332 | 790 | 1344 | 660 | 1372 | 1084 | 2186 |



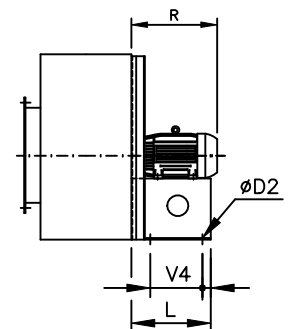
R = RELÓGIO CR = CONTRA RELÓGIO

POSIÇÕES 0°, 90° e 180°

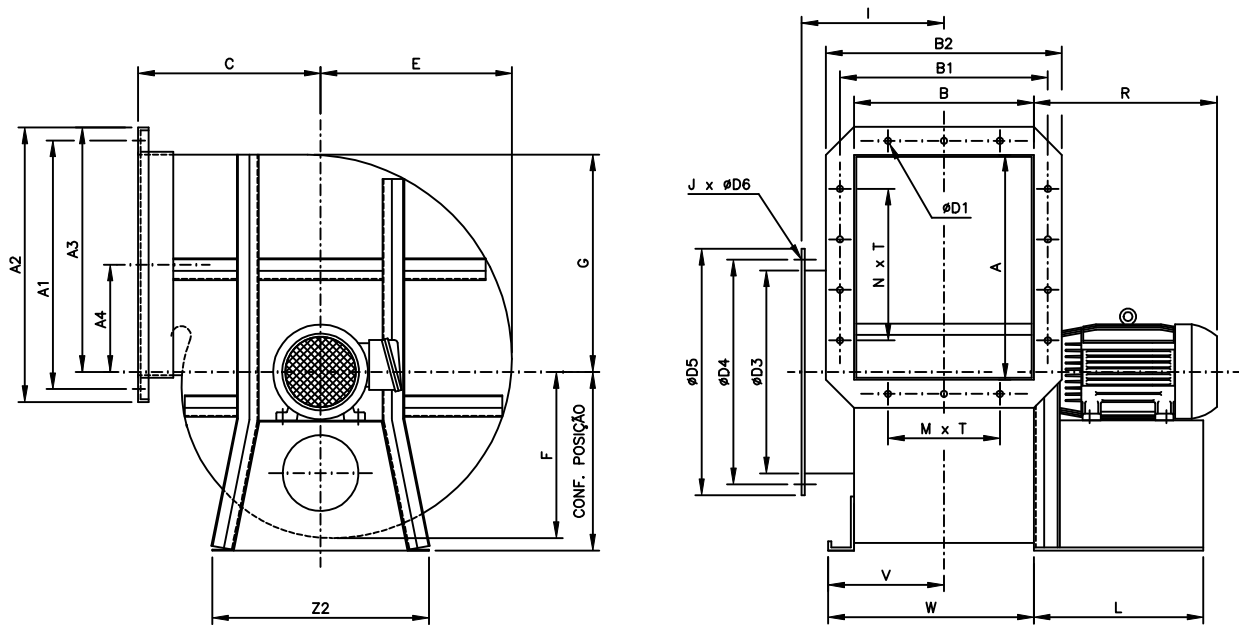
| MOD. | CARC. MOTOR | Z | Z1 | P1 | P2 | Q | R | V3 | V4 | W1 | L | Perfil C kg ¹⁾ |
|------|-------------|-----|-----|----|----|----|-----|-----|-----|------|-----|---------------------------|
| 400 | 71 | 400 | 402 | 20 | 20 | 40 | 200 | 529 | 140 | 579 | 180 | 6 |
| | 80 | | | | | | 240 | 549 | 160 | 599 | 200 | 6 |
| | 90 | | | | | | 240 | 579 | 190 | 629 | 230 | 6 |
| | 100 | | | | | | 300 | 619 | 230 | 669 | 270 | 7 |
| | 112 | | | | | | 300 | 619 | 230 | 669 | 270 | 7 |
| 450 | 80 | 450 | 452 | 20 | 20 | 40 | 240 | 589 | 160 | 639 | 200 | 7 |
| | 90 | | | | | | 240 | 619 | 190 | 669 | 230 | 7 |
| | 100 | | | | | | 300 | 659 | 230 | 709 | 270 | 8 |
| | 112 | | | | | | 300 | 659 | 230 | 709 | 270 | 8 |
| 500 | 80 | 500 | 502 | 20 | 20 | 40 | 240 | 634 | 160 | 684 | 200 | 8 |
| | 90 | | | | | | 240 | 664 | 190 | 714 | 230 | 8 |
| | 100 | | | | | | 300 | 704 | 230 | 754 | 270 | 9 |
| | 112 | | | | | | 300 | 704 | 230 | 754 | 270 | 9 |
| 560 | 90 | 560 | 562 | 20 | 20 | 40 | 240 | 737 | 190 | 787 | 230 | 9 |
| | 100 | | | | | | 300 | 777 | 230 | 827 | 270 | 9 |
| | 112 | | | | | | 300 | 777 | 230 | 827 | 270 | 10 |
| | 132 | | | | | | 400 | 857 | 310 | 907 | 350 | 10 |
| 630 | 112 | 630 | 632 | 20 | 20 | 40 | 300 | 827 | 230 | 877 | 270 | 11 |
| | 132 | | | | | | 400 | 907 | 310 | 957 | 350 | 11 |
| 710 | 112 | 710 | 710 | 25 | 25 | 50 | 300 | 887 | 210 | 937 | 270 | 12 |
| | 132 | | | | | | 400 | 977 | 290 | 1027 | 350 | 12 |



POSIÇÃO 270°



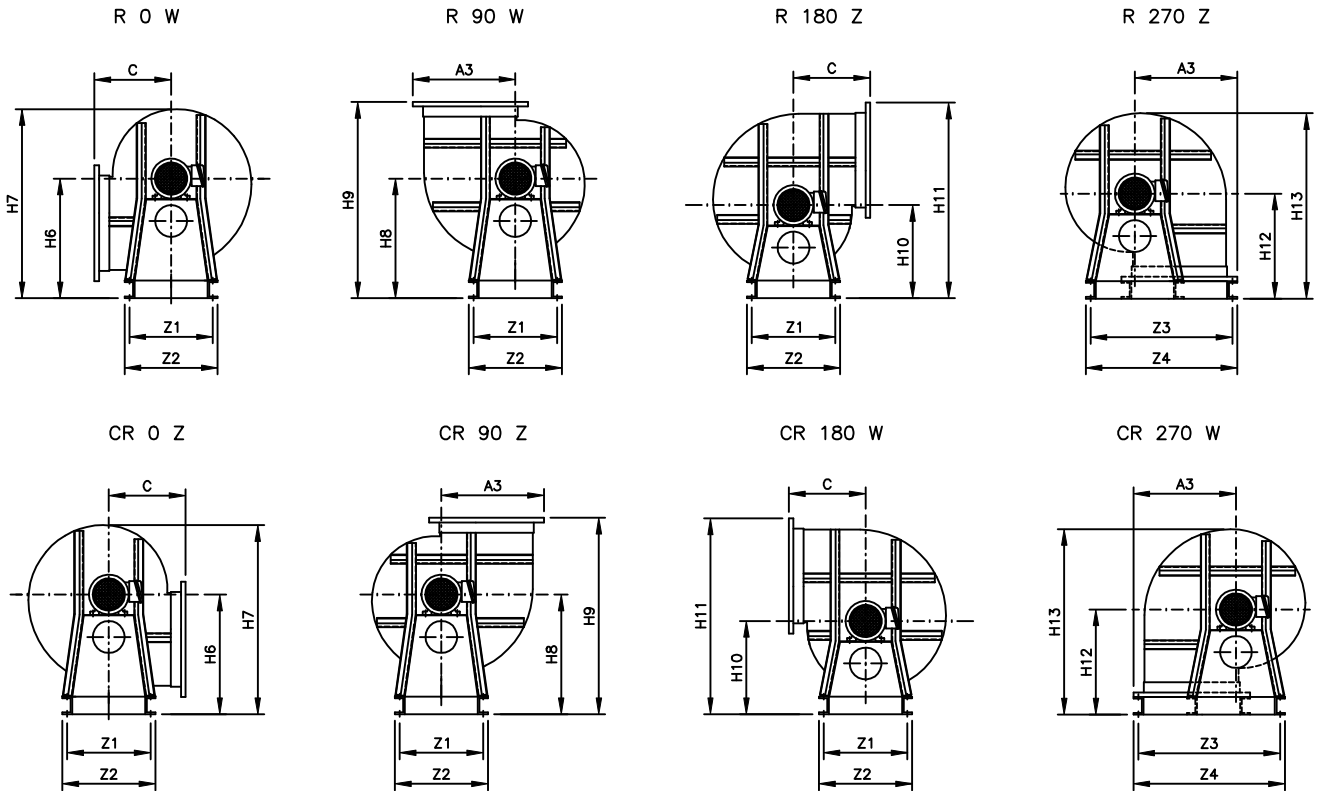
NOTAS: 1) PESO DOS TRILHOS DO VENTILADOR E MOTOR, PORÉM SEM MOTOR.
2) AO FABRICANTE RESERVA-SE O DIREITO DE ALTERAÇÃO SEM PRÉVIO AVISO. AGO/15



| MOD. | A | A1 | A2 | A3 | A4 | B | B1 | B2 | C | ØD1 | ØD2 |
|------|------|------|------|------|-----|------|------|------|-----|-----|-----|
| 710 | 743 | 783 | 823 | 752 | 341 | 565 | 605 | 645 | 554 | 9 | 14 |
| 800 | 803 | 843 | 883 | 842 | 401 | 635 | 675 | 715 | 622 | 9 | 14 |
| 900 | 904 | 944 | 984 | 942 | 450 | 716 | 756 | 796 | 686 | 9 | 14 |
| 1000 | 1004 | 1044 | 1084 | 1042 | 500 | 806 | 846 | 886 | 785 | 9 | 14 |
| 1120 | 1124 | 1164 | 1204 | 1162 | 560 | 906 | 946 | 986 | 875 | 11 | 14 |
| 1250 | 1254 | 1294 | 1334 | 1292 | 625 | 1006 | 1046 | 1086 | 957 | 11 | 14 |

| MOD. | ØD3 | ØD4 | ØD5 | J x ØD6 | E | F | G | I | M x T | N x T |
|------|------|------|------|---------|------|-----|------|-----|---------|---------|
| 710 | 710 | 760 | 810 | 16 x 11 | 627 | 542 | 712 | 402 | 5 x 100 | 6 x 100 |
| 800 | 800 | 850 | 900 | 16 x 11 | 706 | 610 | 802 | 437 | 5 x 100 | 7 x 100 |
| 900 | 900 | 950 | 1000 | 16 x 11 | 794 | 686 | 902 | 478 | 6 x 100 | 8 x 100 |
| 1000 | 1000 | 1050 | 1100 | 16 x 11 | 882 | 762 | 1002 | 553 | 7 x 100 | 9 x 100 |
| 1120 | 1120 | 1170 | 1220 | 24 x 11 | 988 | 854 | 1122 | 603 | 7 x 125 | 8 x 125 |
| 1250 | 1250 | 1300 | 1350 | 24 x 11 | 1102 | 952 | 1252 | 653 | 7 x 125 | 9 x 125 |

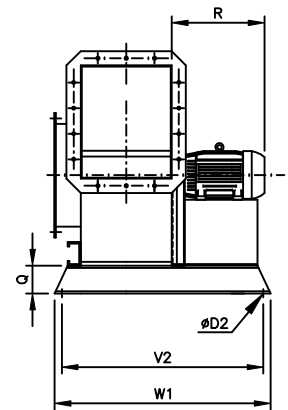
| MOD. | V | W | H6 | H7 | H8 | H9 | H10 | H11 | H12 | H13 | PESO - kg | |
|------|-----|------|------|------|------|------|------|------|------|------|-----------|----------|
| | | | | | | | | | | | ISS | ILS/IAFS |
| 710 | 341 | 618 | 790 | 1332 | 790 | 1344 | 660 | 1414 | 634 | 1261 | 150 | 160 |
| 800 | 376 | 688 | 880 | 1490 | 880 | 1502 | 735 | 1579 | 702 | 1408 | - | 195 |
| 900 | 417 | 768 | 980 | 1666 | 980 | 1666 | 820 | 1664 | 766 | 1560 | - | 260 |
| 1000 | 462 | 858 | 1080 | 1842 | 1080 | 1865 | 900 | 1944 | 865 | 1747 | - | 365 |
| 1120 | 518 | 964 | 1247 | 2096 | 1247 | 2122 | 1047 | 2211 | 1002 | 1990 | - | 470 |
| 1250 | 568 | 1064 | 1377 | 2329 | 1377 | 2334 | 1152 | 2446 | 1084 | 2186 | - | 610 |



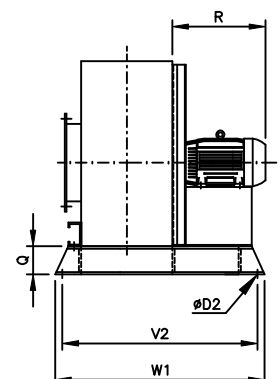
POSIÇÕES 0°, 90° e 180°

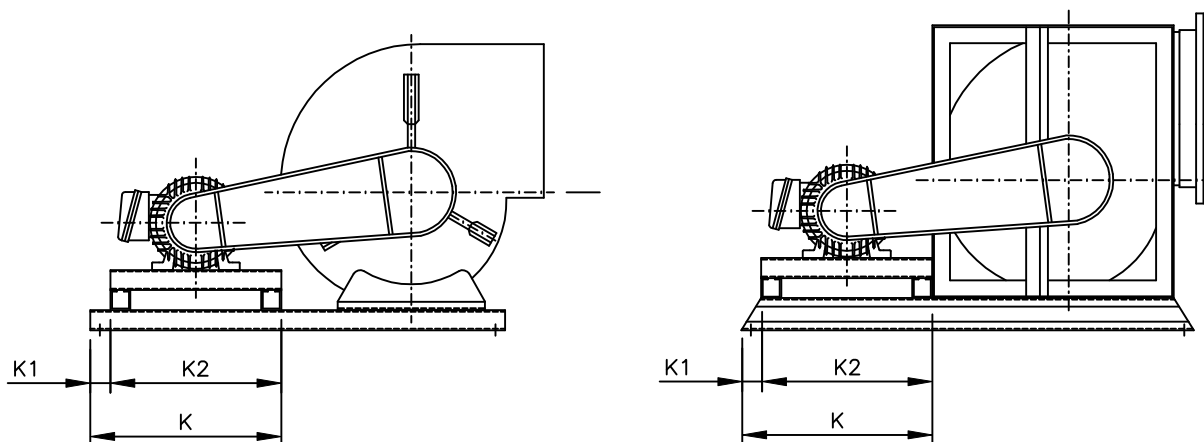
R = RELÓGIO CR = CONTRA RELÓGIO

| MOD. | CARC.M OTOR | Z1 | Z2 | Z3 | Z4 | Q | L | R | V2 | W1 | B.U.- kg |
|------|----------------|------|------|------|------|-----|-----|-----|------|------|----------|
| 710 | 160 | 710 | 652 | 1067 | 1117 | 100 | 480 | 560 | 1084 | 1200 | 11 |
| | 180 | | | | | | 480 | 620 | 1084 | 1200 | 11 |
| 800 | 132 | 800 | 742 | 1202 | 1252 | 100 | 378 | 430 | 1084 | 1200 | 11 |
| | 160 | | | | | | 480 | 560 | 1149 | 1265 | 12 |
| | 180 | | | | | | 480 | 620 | 1149 | 1265 | 12 |
| | 200 | | | | | | 580 | 690 | 1284 | 1400 | 13 |
| 900 | 160 | 900 | 842 | 1352 | 1402 | 100 | 480 | 560 | 1284 | 1400 | 13 |
| | 180 | | | | | | 480 | 620 | 1284 | 1400 | 13 |
| | 200 | | | | | | 580 | 690 | 1364 | 1480 | 14 |
| 1000 | 160 | 1000 | 942 | 1502 | 1552 | 100 | 480 | 560 | 1364 | 1480 | 14 |
| | 180 | | | | | | 480 | 620 | 1364 | 1480 | 14 |
| | 200 | | | | | | 580 | 690 | 1454 | 1570 | 15 |
| 1120 | 160 | 1120 | 1056 | 1682 | 1746 | 128 | 480 | 560 | 1526 | 1590 | 95 |
| | 180 | | | | | | 480 | 620 | 1526 | 1590 | 95 |
| | 200 | | | | | | 580 | 690 | 1626 | 1690 | 97 |
| 1250 | 160 | 1250 | 1186 | 1877 | 1941 | 128 | 480 | 560 | 1626 | 1690 | 108 |
| | 180 | | | | | | 480 | 620 | 1626 | 1690 | 108 |
| | 200 | | | | | | 580 | 690 | 1726 | 1790 | 110 |



POSIÇÃO 270°





| MODELO | K1 |
|--------|----|
| 160 | 47 |
| 180 | 47 |
| 200 | 55 |
| 224 | 37 |
| 250 | 55 |
| 280 | 35 |
| 315 | 45 |
| 355 | 60 |
| 400 | 60 |
| 450 | 75 |
| 500 | 75 |
| 560 | 75 |
| 630 | 75 |
| 710 | 75 |
| 800 | 50 |
| 900 | 50 |
| 1000 | 50 |
| 1120 | 65 |
| 1250 | 65 |

| CARÇAÇA MOTOR | K2 |
|---------------|-----|
| 63/71/80/90 | 290 |
| 100/132 | 400 |
| 180 | 570 |
| 200/225 | 765 |
| 250/280 | 915 |

NOTAS: 1) A COTA "K" É O SOMATÓRIO DAS COTAS "K1" E "K2". A COTA "K1" VARIA EM FUNÇÃO DO TAMANHO DO VENTILADOR. A COTA "K2" REFERE-SE A LARGURA DA BASE DO MOTOR E VARIA EM FUNÇÃO DA CARÇAÇA DO MOTOR.

NOS MODELOS 400,450 E 500, A COTA "K1" TEM VALORES DIFERENTES PARA VENTILADORES SIROCCO "IS" E PARA VENTILADORES LIMIT LOAD "IL".

2) AO FABRICANTE RESERVA-SE O DIRETO DE ALTERAÇÃO SEM PRÉVIO AVISO. SET/15.